



XC-9602B

IP Cabinet Speaker

SPON IP Cabinet Speaker XC-9602B adopts embedded industrial grade chip to make the startup time more faster . Built-in 5-inch woofer and 3-inch tweeter, perfectly restore vocals and music . It is mainly used for indoor environment ,such as classroom .etc



MAIN FEATURES

All-In-One Audio Technology

- Unified design with audio decoder, digital amplifier, and speaker.
- Class-D digital amplifier with 2×30W output for external speakers.
- Built-in clock chip for NTP automatic timing.



Advanced Broadcasting & Communication

- Offline broadcasting with high-capacity internal flash.
- Local broadcasting via UHF wireless microphone.
- Standard SIP protocol support for PBX integration.

Connectivity & System Management

- IEEE 802.3 at PoE+ interface for versatile installation.
- Remote management and online upgrade capabilities.



SPECIFICATION

Power Parameters

Power Supply:	AC 220V 50/60Hz, PoE+ (IEEE802.3at)
Standby Power Consumption:	≤3W
Power Output:	2×30W (At AC 220V/50Hz Powered) 2×7W (At PoE+ Powered)

Audio Parameters

Audio Codec:	MP3, PCM, G.711 A-Law, G.711 M-Law
Sensitivity:	85dB±3dB (1W, 1m)
Maximum SPL:	100dB±3dB
S/N (Signal-To-Noise) Ratio:	≥80dB
Audio Sampling & Bit Rate:	8kHz~44.1kHz, 16bit, 8kbps~320kbps
Frequency Response:	50Hz~18kHz

Network Parameters

Network I/F:	10BASE-T/100BASE-TX RJ45
Network Protocol:	SIP (RFC3261),FTP,HTTP,TCP/IP,UDP,ARP,ICMP,IGMP
Configuration Method:	Web Interface Or DevConfig Tool

Mechanical&Environment Properties

Mounting Method:	Wall-Mounted
Installation Environment:	Dry Indoor Locations Only
Operating Temperature:	0°C~+45°C
Storage Temperature:	-20°C~+65°C
Operating Humidity:	10%~90% RH Non-Condensing
Grille Material:	Mesh Cloth
Grille Color:	Off-White
Color:	Off-White
Cabinet Material:	SGS Certified Medium Density Fiberboard
Cabinet Color:	White
Product Weight:	3.25Kg
Product Dimensions:	290×215×117mm
Packaging:	Carton Box
Packed Dimensions:	370×360×320mm
Packed Weight:	4.0KG
Product Warranty:	2 Years Limited

Accessories

1×2-Pin Pluggable Terminal Block Connector (5.0mm Pitch,AWG 26-16)

1×3.5mm Male To Male Stereo Audio Cable (Length: 2.5m)

3×Phillips Pan Head Self-Tapping Screw

3×Plastic Self-Drilling Drywall Anchors

1×Quick Installation Guide

1×Quality Certificate

1×Warranty Card

PORTS DESCRIPTION

④ Line Input 01/02

1/8-inch (3.5mm) TRS Jack (Balanced, Sensitivity/Impedance: 600mV/10kΩ、300mV/10kΩ)

③ Line Output

1/8-inch (3.5mm) TRS Jack

② USB Port

Connecting and driving SEC-M1101A LED clock for text information posting, data display and time display.

① Constant-Voltage Backup Input

2-Pin Pluggable Terminal Block (5.0mm Pitch, AWG 26-16), connecting with constant-voltage amplifier for backup input during power cut.

⑤ Network task indicator light

After connecting cable, green light is always on if not receiving software task; The green light will flash when receiving software task. LINK1 and LINK2 is correspond to network port 1 and network port 2 separately.

⑥ Network port

For connecting switch to assure it to be logged in the software normally. (With double network port, the first one is for POE power supplying)

⑦ Indicators & Buttons

- 2×Network Data Indicator LED
- 1×Status Indicator LED
- 1×Reset Button

⑧ Power supply port

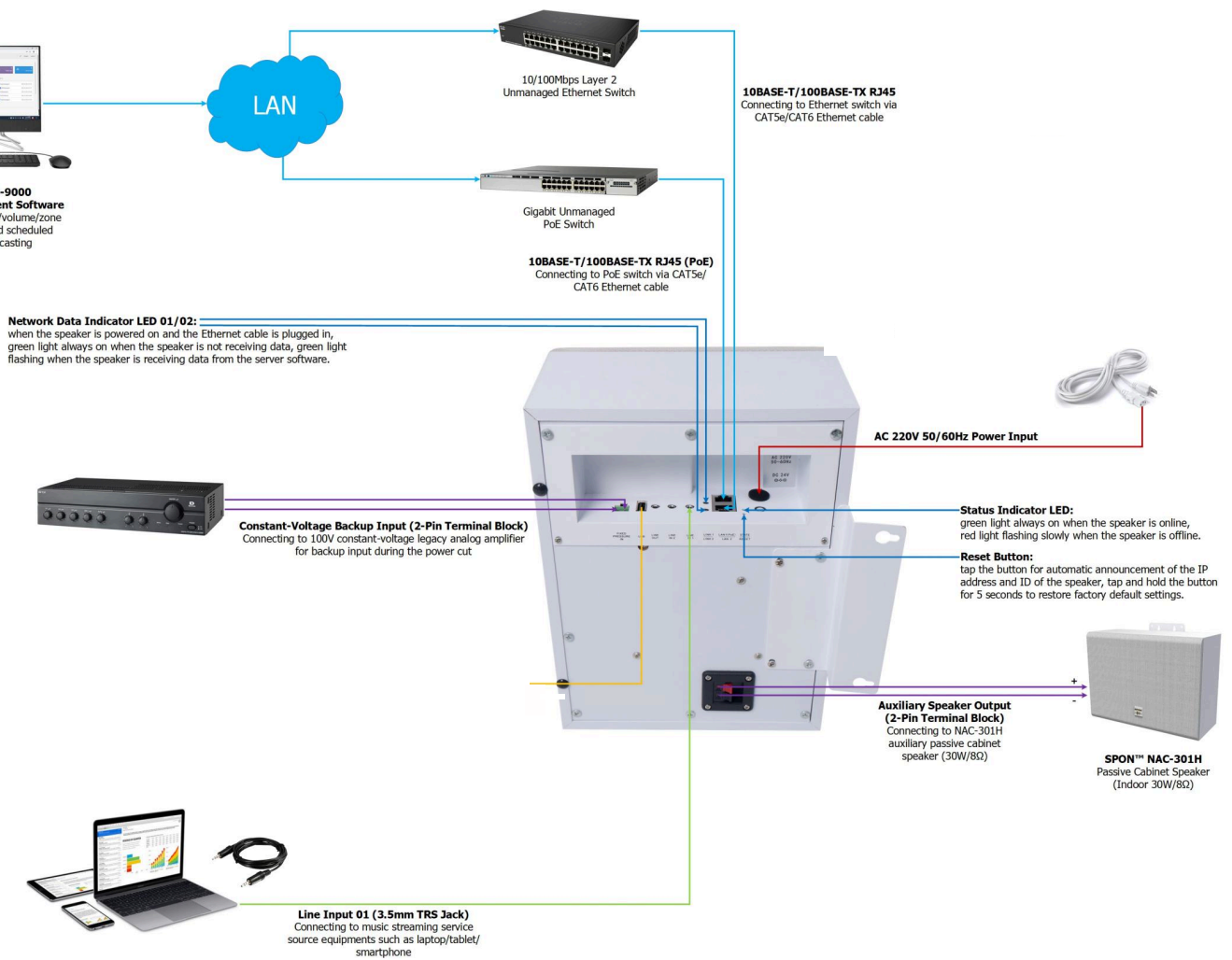
Connecting AC220V power supply

⑨ Auxiliary Speaker Output (8Ω)

Connecting and driving NAC-301H auxiliary passive cabinet speaker (30W/8Ω)



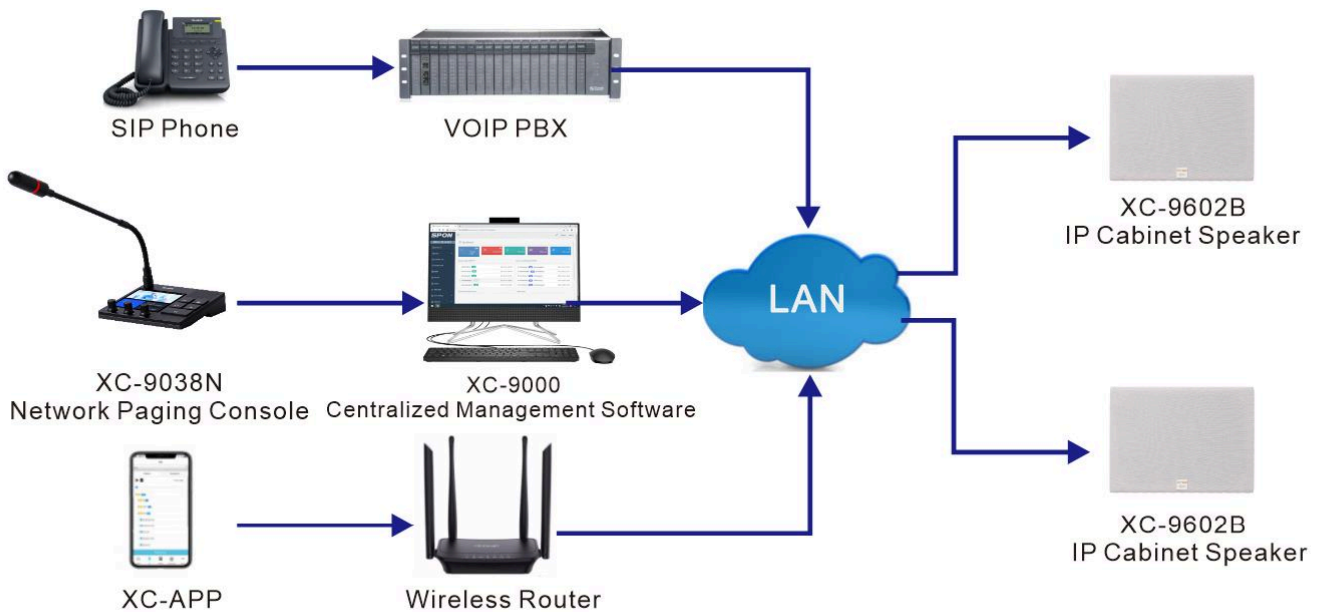
CONNECTION DIAGRAM



APPLICATION

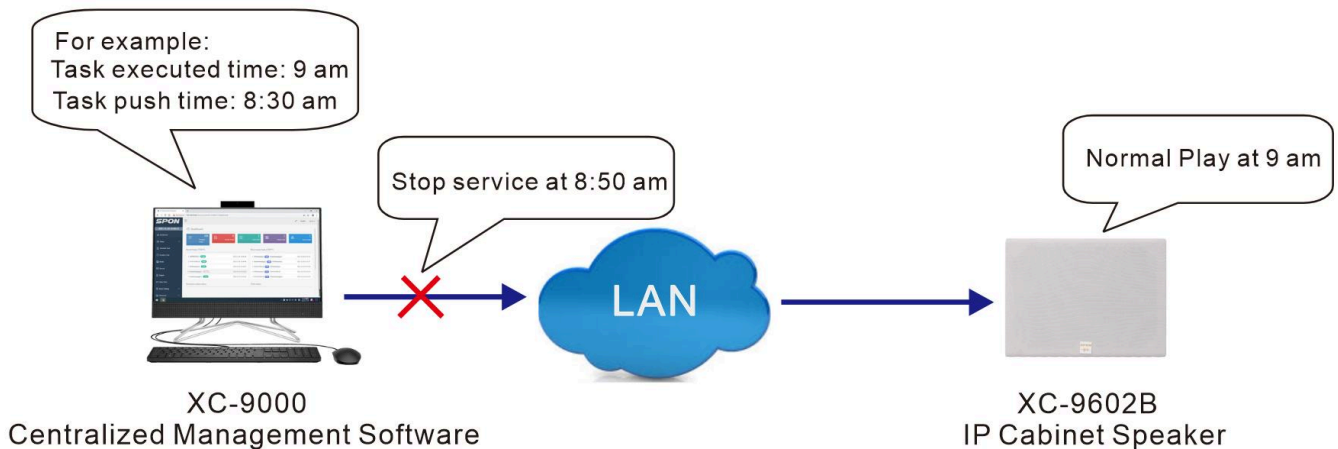
Application 1

The IP Cabinet Speaker XC-9602B support SIP protocol which can be independently used as a sip endpoint to integrated with mainstream VOIP system for receiving sip call from SIP phone or SIP softphone ; Meanwhile , it also can receive broadcast from SPON management software 、 IP Paging Mic and XC-APP.



Application 2

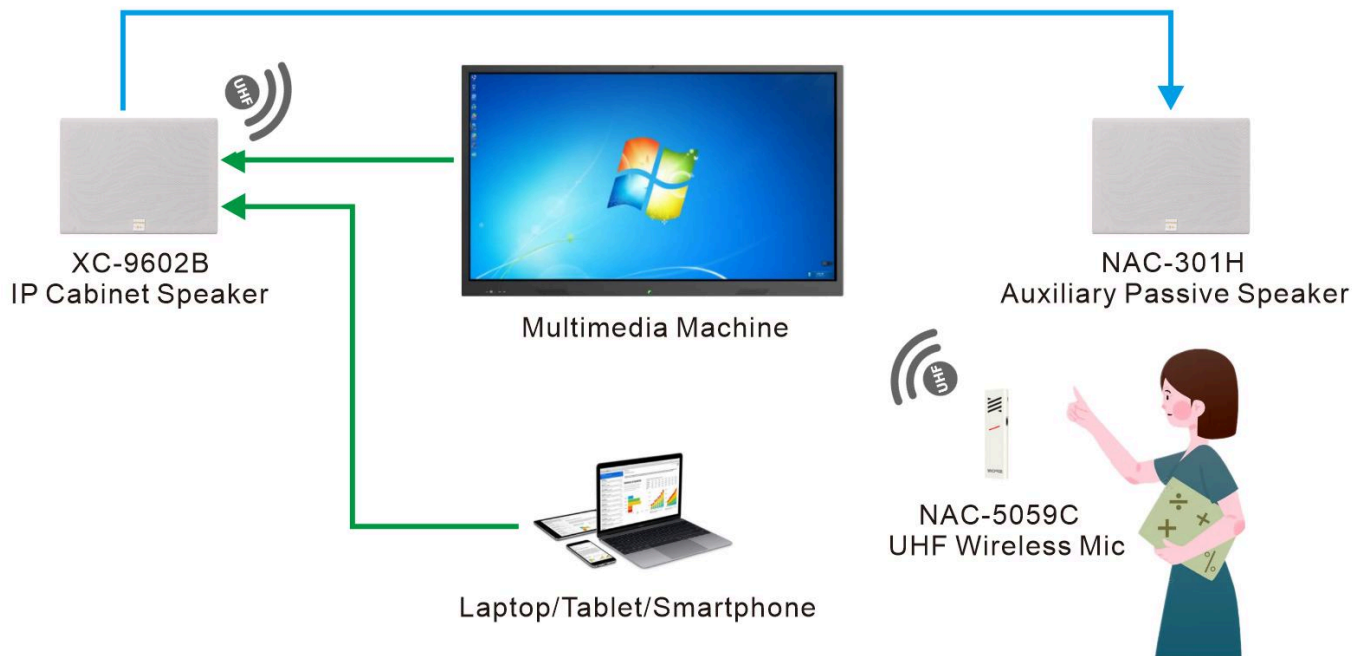
The IP Cabinet Speaker XC-9602B support offline broadcasting , the offline timed task need to be pushed to the speaker's FTP in advanced .



APPLICATION

Application 3

The IP Cabinet Speaker XC-9602B with multiple audio interface which can be connect with external audio sources .Due to its built-in UHF wireless transceiver module , the UHF wireless mic can be connected to realize local voice teaching.

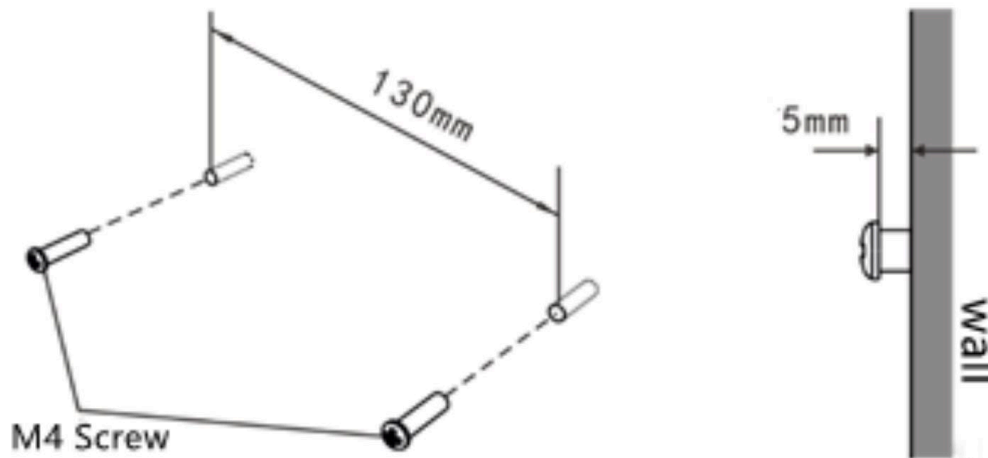


INSTALLATION

■ Installation instructions

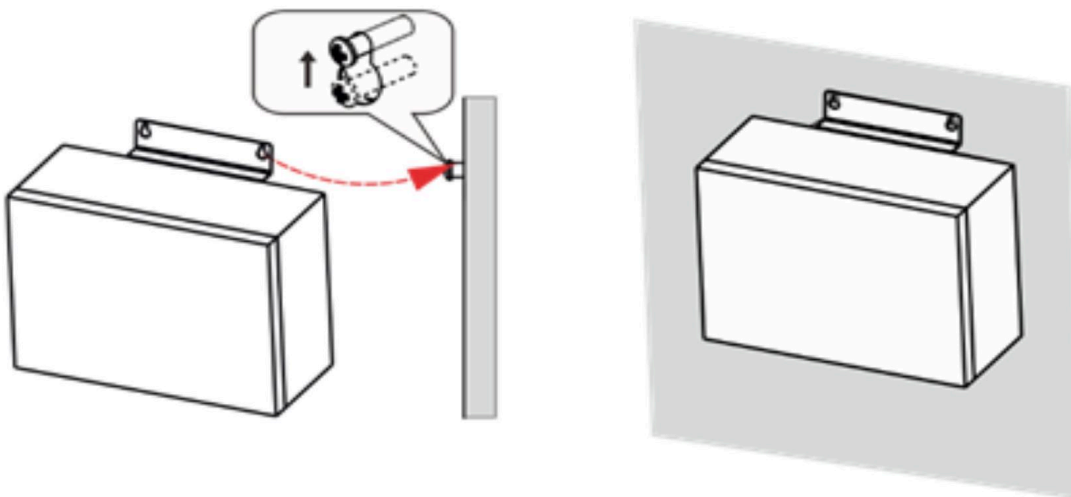
Step 1:

horizontally installing 2pcs of M4 screws to the wall according to the hole position, leaving 5mm distance, please see the above picture showing.



Step 2:

please placing 2pcs of holes to hanging on the screw, and then tighten the screw to ensure fixed it well. And keep the device in horizontally installation.



CASE

